



S' / O

SILO
ART AND
RURAL
LATITUDE

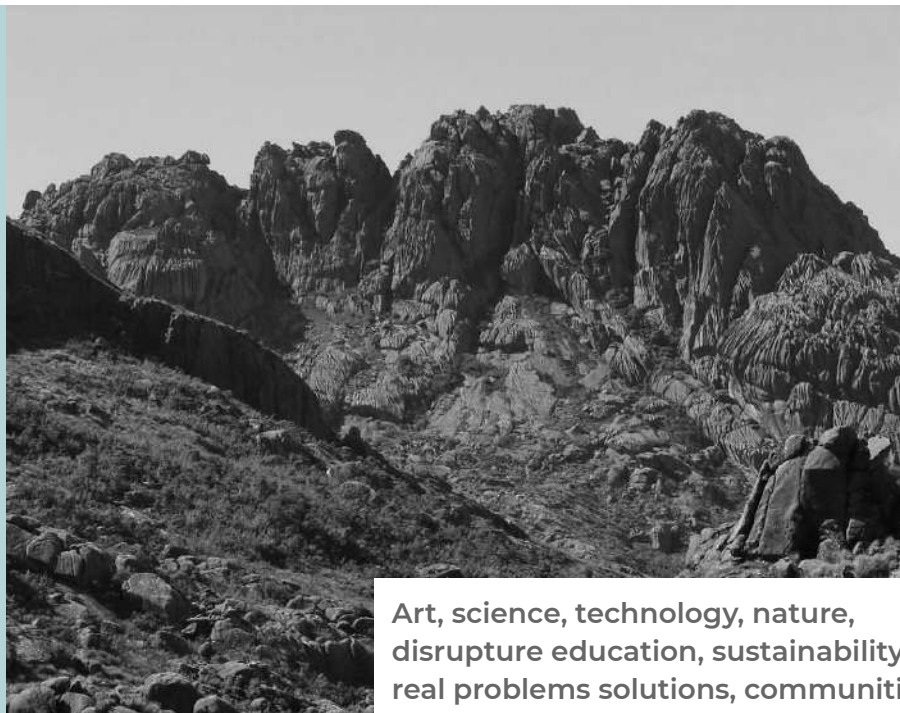
portfolio / 2020



SILO
ART AND
RURAL
LATITUDE

Silo – Art and Rural Latitude

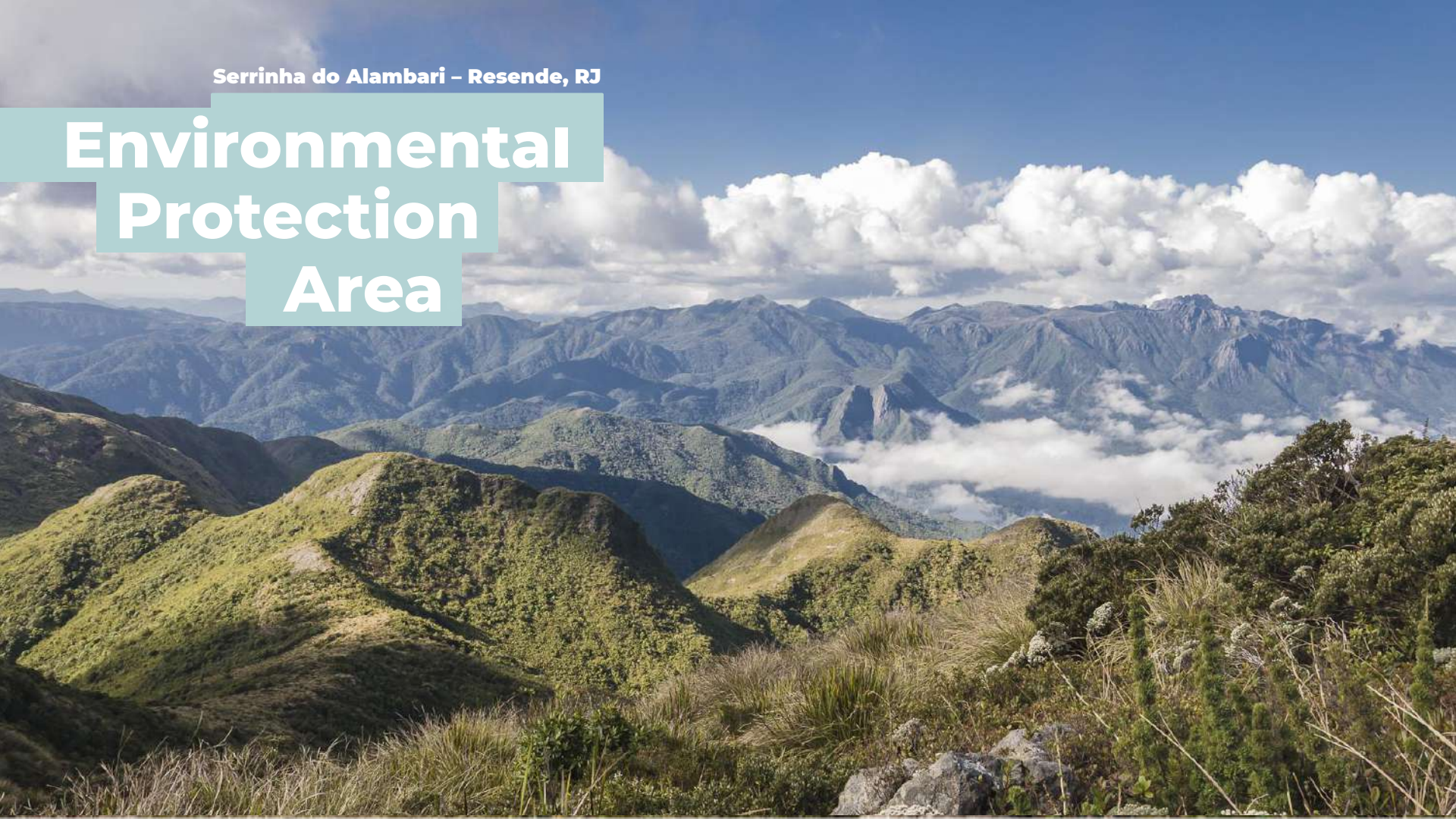
is a non profit organization dedicated to promote and spread art, Science and technology in rural areas and in environmental conservation units through immersive experiences and transdisciplinary practices.

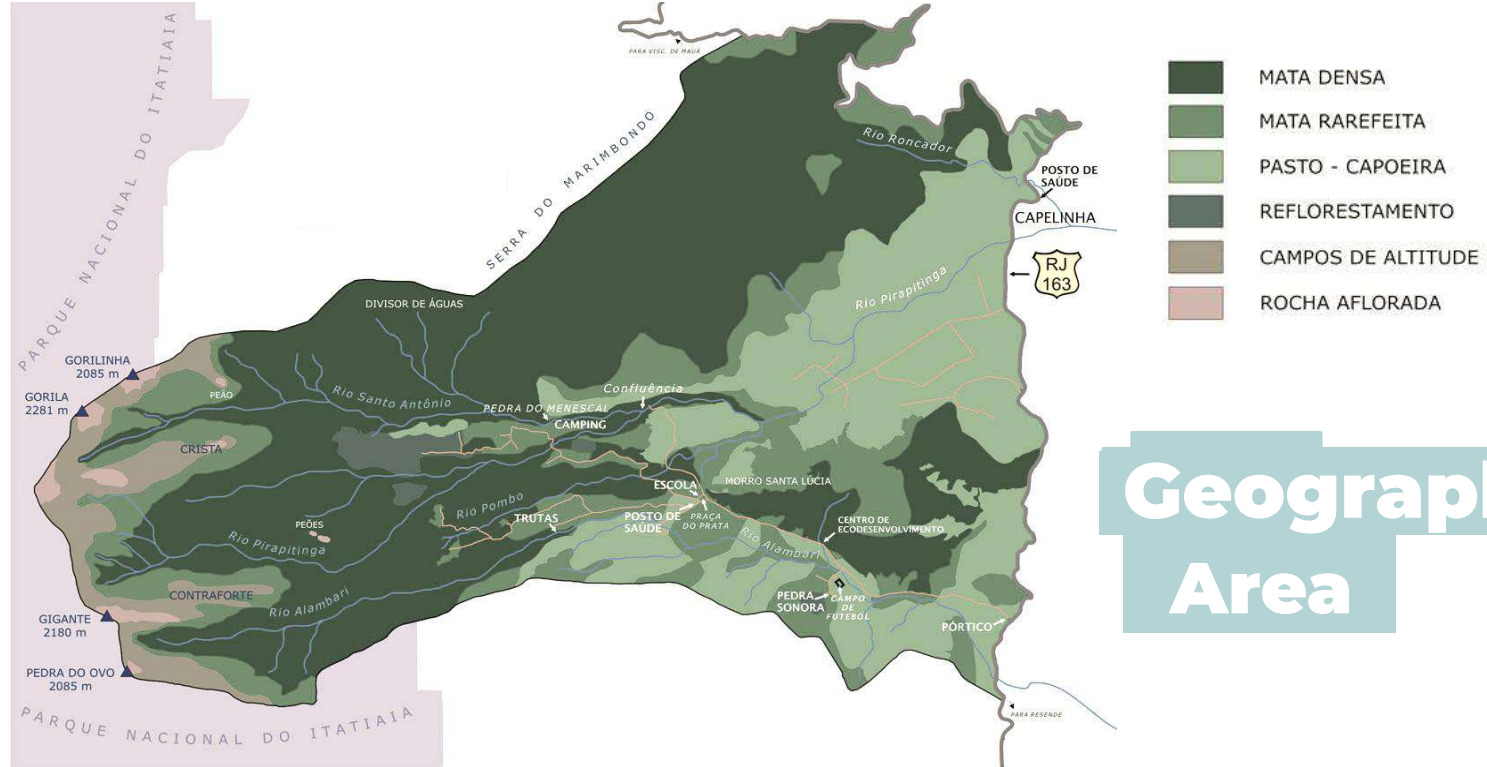


Art, science, technology, nature, disrupture education, sustainability, real problems solutions, communities, periphery.

Serrinha do Alambari – Resende, RJ

Environmental Protection Area





Geographic Area



This building was built in the 1950s to be a casino club. It stopped being a casino and was used by neighbors to celebrate traditional festivals.

After being closed for more than 30 years, it became the headquarters of the Silo. It is a precarious building that currently houses our laboratories and functions as a space for atelier, workshops and courses.

It is being
renovated and in
the future it will be
an accommodation
for people and
projects.



PERFORMING AREAS



Silo has a national and internacional range on the different performing areas.

Brazil, Canada, United States, Mexico, Dominican Republic, Costa Rica, Venezuela, Peru, Guatemala, Ecuador, Chile, Colombia, Bolivia, Argentina, Uruguay, Morocco, Cameroon, Portugal, Spain, France, Italy, Austria, Hungary, Croatia, Bosnia and Herzegovina, Germany, Poland, Lithuania, Belgium, Netherlands, United Kingdom, Finland, Ireland, Greece, Israel, Russia, Turkey, Syria, Iraq, Indonesia, Thailand, Bangladesh, India, Japan, China, Taiwan, Australia, among others...

Silo proposes new ways of life, new ways to do and to realize the world in response to current crises.

WAYS OF LIFE

Sustainable development
Building inclusive territories
Food and energy autonomy
Circular economy
Disruptive learning
New ways of working
Human and environmental development





EXPERIENCES

Silo offers immersive experiences, in natural environments, out of the big urban centers.

09

Countryside
Conservation Units
Collaboration
Activation of senses
Integration with space
Self knowledge

INITIATIVES

Silo belongs to a network of initiatives that are born and act in peripheral spaces to the big urban centers.

The countryside ahead of Science, art and technology.

Positive impacts / Learning Communities.

Tools to changes.

Real problems solutions.
New economy.



Know how to do Cultura Maker and Rural DIY Reality

Technological inclusion to women and girls.

Technological literacy to children and peripheral communities.

Ancestors knowledge.

Prototyping.

Culture maker.

Use of free hardware
and software tools.

05

TECHNOLOGY

Silo brings an expanded concept of
technology



S' / °

SILO
ART AND
RURAL
LATITUDE

projects

p. 13 /



Resilience:
Artist in residence

p. 38 /



Encontrada

p. 25 /



Labs:
Interactivos
Emergency Lab

12

CaipiraTech
Lab

p. 36



Resilience: Artist in Residence

Contemporary art
Research
Experimentation
Immersion
Nature

<https://resilience.silo.org.br/>





<https://resilience.silo.org.br>

Resilience: Artist in Residence

The artistic residence offers immersion to artistic research and experimentations directed to artists and curators interested in developing their work in a rural environment and in Conservation Units.

On the one hand, it's goal is to promote a territorial experience that differs from urban life for artistic creation and experimentation, and on the other hand, to create narratives for the present rural/environmental universe through Contemporary Art.













20



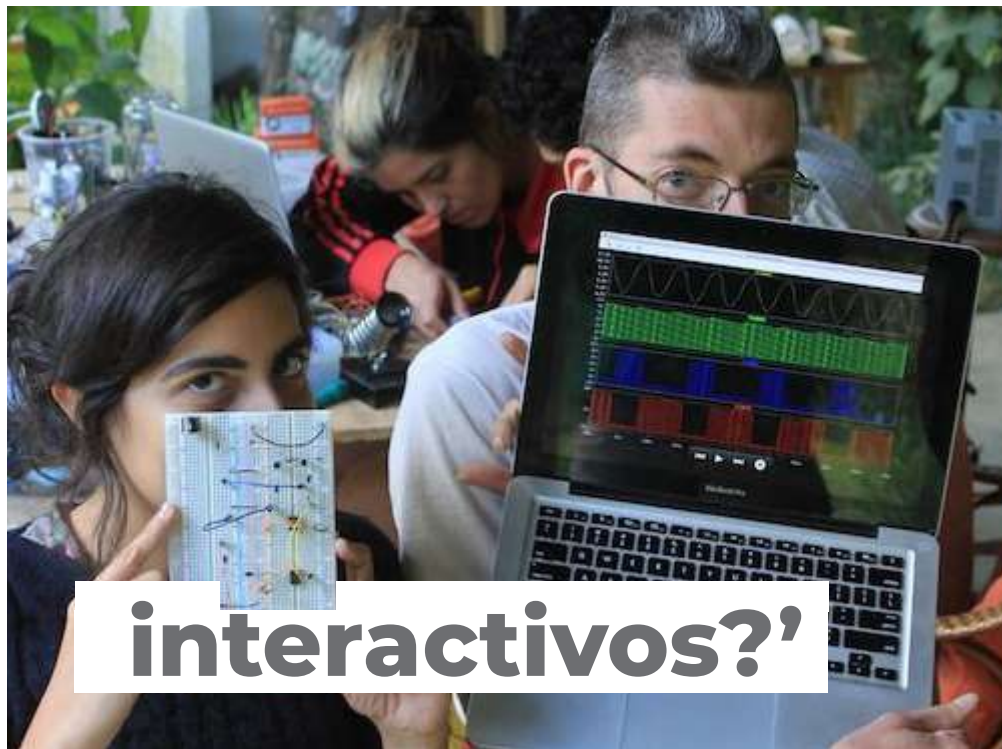


A person with long hair is crouching in a dark, cobblestone-floored room. The person is wearing a dark t-shirt and pants. In the background, a brick wall is illuminated by a bright light source, creating a strong glow. On the wall, the text "1 CACHORRO" is displayed in large, glowing, pixelated letters. The floor is made of irregular cobblestones, and there is some debris or a small object on the floor to the right of the person.

1 CACHORRO







25

Prototype
Learning
Experimentation
Collaboration
Sustainability

<https://silo.org.br/interactivos>

LABS

Interactivos and **Emergency Lab**



Collaborative project
development laboratories
focused on production and
research around Science, art
and technology. It's a place
to build a space for reflexion,
investigation and collaborative
work in which is developed and
later shown several proposes
selected through an international
call, in a process open to the
public from the beginning
to the end.

It's goal is to experiment the intersection between popular,
scientific, technical and artistic knowledge in creating
solutions to real problems that are faced in the peripheries
and the countryside. All that lined up to the sustainable
development goals established by ONU, contributing to
prosperity of producers communities and creators within
these spheres.





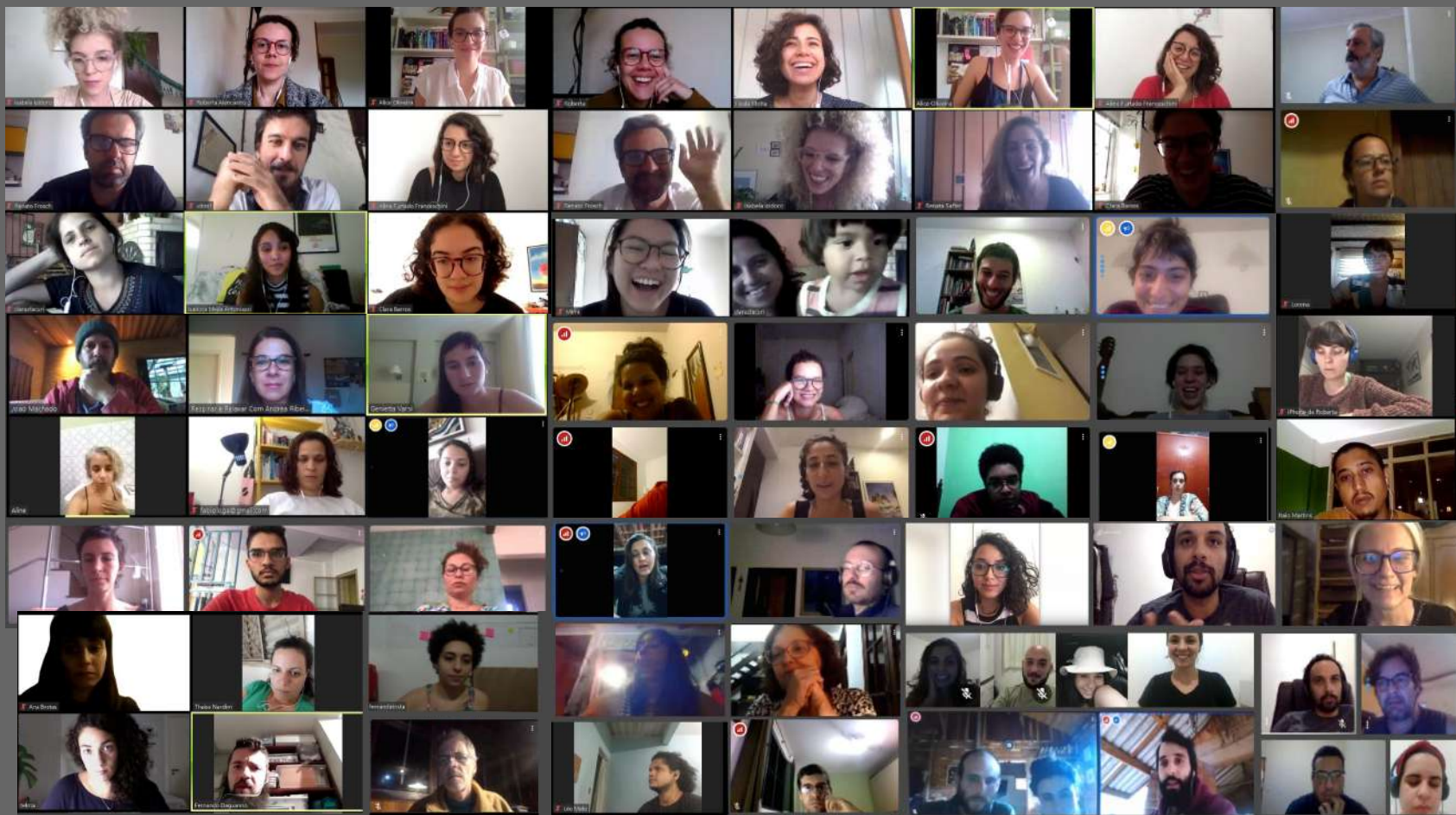














LAB DE EMERGÊNCIA COVID-19



LAB DE EMERGÊNCIA COVID-19



LAB DE EMERGÊNCIA COVID-19



LAB DE EMERGÊNCIA COVID-19



LAB DE EMERGÊNCIA COVID-19



LAB DE EMERGÊNCIA COVID-19



LAB DE EMERGÊNCIA COVID-19



LAB DE EMERGÊNCIA COVID-19

<https://labdeemergencia.silo.org.br>



CaipiraTechLab

36

Agriculture, Architecture,
Ecology, Syntropy, Renewable energy,
Clean energy, Recycling, Reuse,
Sustainable development, Rural,
Conservation Units.

<https://silo.org.br/caipiratechlab/>



CaipiraTechLab

Offers courses and meetings with topics related to agroecology, agroforestry systems, bioarchitecture, power generation, environmental preservation, among others, within

the aim of encouraging the thinking and realization of innovative solutions for a better social, economical and environmental functioning. The program values the Exchange of knowledge between popular and scientific practices.



<https://silo.org.br/caipiratechlab/>



Feminism, Femininity,
Technological inclusion,
Financial inclusion,
Gender equity,
Protagonism, Autonomy.

<https://silo.org.br/encontrada/>

EncontrADA





<https://silo.org.br/encontrada/>



EncontrADA

Feminis meeting focused on the exchange of knowledge between different feminine universes wich make up social, economical and esthetics issues of women and trans-people's life. It's a meeting of generations and Technologies.



EncontrADA offers courses focused on technical learning and projects advisory.









SILO

ART AND
RURAL
LATITUDE

thank you!

cinthia.mendonca@silorg.org.br

+55 21 981 087 115

www.silorg.org.br